

Plenary Session, Monday, March 2, 2009
System of Care Values in Research and Evaluation

Abraham Wandersman, Ph.D., Psychology, University of South Carolina
wandersman@sc.edu

Four Keys to Success

Theory, Implementation, Evaluation, Resource/System Support

I. Four Keys Applied to Participation

A. Definition of Participation

"...a process in which individuals take part in decision making in the institutions, programs, and environments that affect them" (Heller, Price, Reinharz, Riger, & Wandersman, 1984, p. 339)

B. Theory

***Individual level:** if participation is such a good thing, why doesn't everyone participate?
Who participates, who does not, and why?*

***Organizational level:** why do some organizations survive and thrive, while others die out?*

C. Neighborhood Participation Project

D. Block Booster Project

E. If the findings about organizational viability are obvious, why do so many die out?

F. How can academics collaborate with community organizations to improve organizational viability?

G. Coalitions

H. Implementation

I. Evaluation

1. ***Empowerment Evaluation:** "an evaluation approach that aims to increase the probability of program success by:*

- *Providing program stakeholders with tools to assess planning, implementation, & self-evaluation of their program*

- *Mainstreaming evaluation as part of program/ organization's planning & management (Wandersman et al, 2005)*

2. ***Getting To Outcomes***[®]

J. Resource/System Support

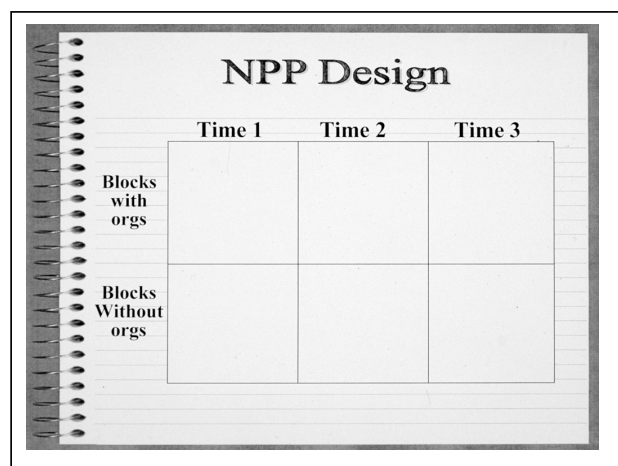
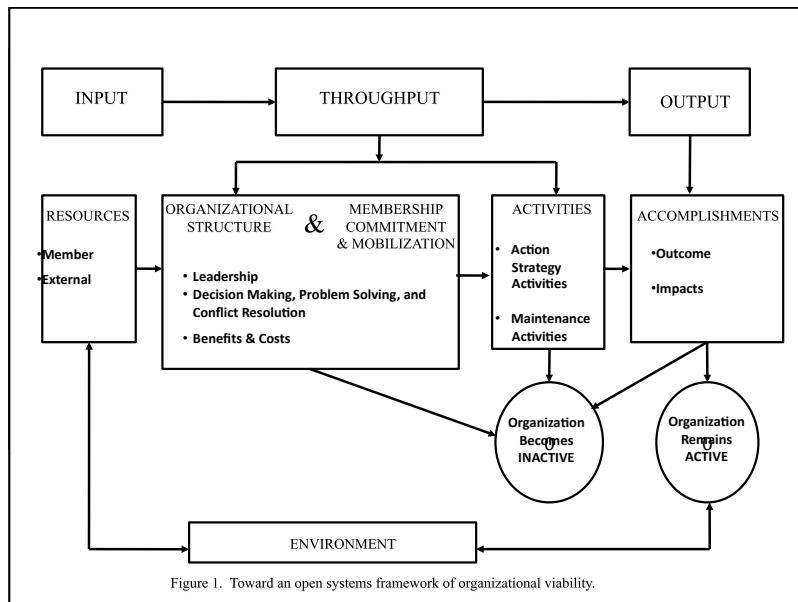
K. Getting To Outcomes results

II Four Keys to Success and Family Participation

Elaine Slaton, Federation of Families for Children's Mental Health eslaton@ffcmh.org

- A. Theory
- B. Implementation
- C. Evaluation
- D. Resource/System Support

Wandersman, A. (2009) Four keys to success (theory, implementation, evaluation, resource/systems support): High hopes and challenges in participation. *American Journal of Community Psychology*, March.



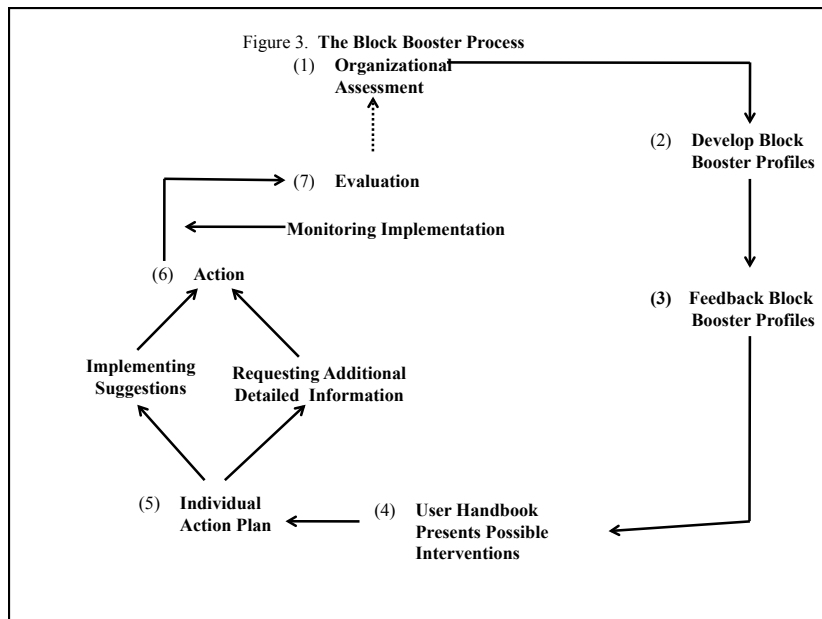
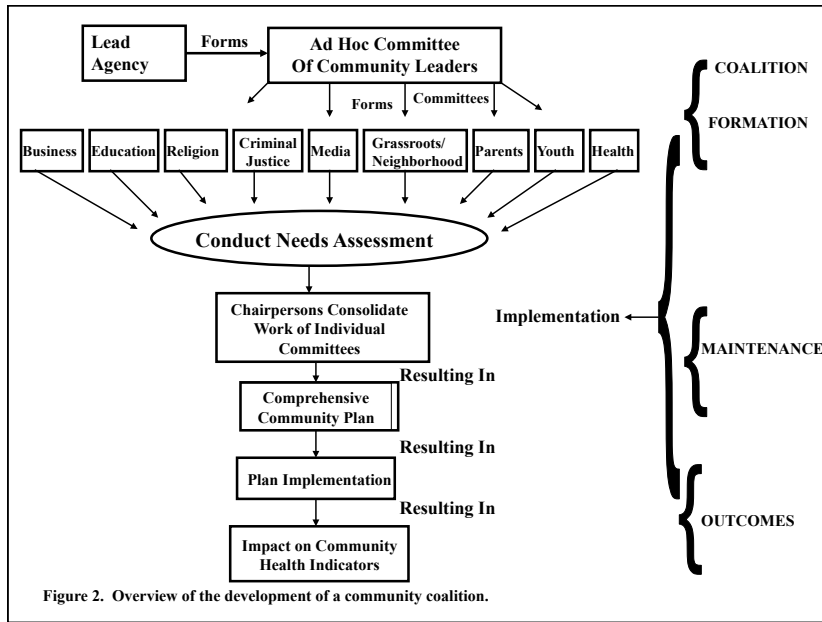
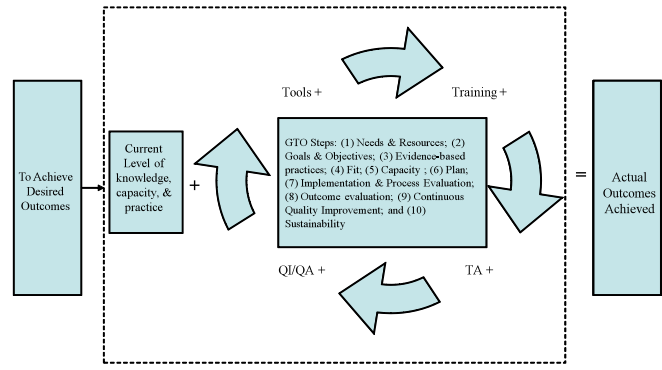


Table 1. Evaluation of MPA by Developmental Phases, Ecological Levels, and Stages of Readiness

Developmental phases and measures	Ecological Levels					Stages of readiness
	Intra-personal	Inter-personal	Organizational	Community	Public Policy	
Phase 1: Coalition formation						
Forecast			X			Initial mobilization and establishing organizational structure
Meeting Effectiveness Inventory	X	X	X			
Project Insight Form	X	X	X			
Committee survey	X	X	X			
Needs Assessment Checklist			X	X		
Plan Quality Index			X	X	X	
Phase 2: Plan implementation						
Tracking of Actions			X	X	X	Building capacity for action and implementing
Prevention Plus III	X	X	X	X	X	
Policy Analysis Case Study			X		X	
Phase 3: Impact						
Key Leader survey	X		X		X	Refining and institutionalizing
Community survey	X			X		
Trend data				X	X	
Level of Institutionalization Scale			X	X	X	

GTO® Accountability Questions	Relevant Literatures
1. What are the underlying needs and conditions that must be addressed? (NEEDS/RESOURCES)	1. Needs/Resource Assessment
2. What are the goals, target population, and objectives? (i.e., desired outcomes)? (GOALS)	2. Goal Setting
3. What science (evidence) based models and best practice programs can be used in reaching the goals (BEST PRACTICE)?	3. Consult Literature on Science Based and Best Practice Programs
4. What actions need to be taken so the selected program “fits” the community context? (FIT)	4. Feedback on Comprehensiveness and Fit of Program
5. What organizational capacities are needed to implement the program? (CAPACITIES)	5. Assessment of Organizational Capacities
6. What is the plan for this program (PLAN)	6. Planning
7. Is the program being implemented with quality (PROCESS)	7. Process evaluation
8. How well is the program working? (OUTCOME EVALUATION)	8. Outcome and Impact Evaluation
9. How will continuous quality improvement strategies be included? (IMPROVE)	9. Total Quality Management; Continuous Quality Improvement
10. If the program is successful, how will it be sustained? (SUSTAIN)	10. Sustainability and Institutionalization

GTO System Model



Community Planning Processes

